

2023-11

Phenotypic effect of GBA1 variants in individuals with and without Parkinson's disease: The RAPSODI study

Toffoli, M

<https://pearl.plymouth.ac.uk/handle/10026.1/21747>

10.1016/j.nbd.2023.106343

Neurobiology of Disease

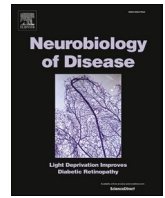
Elsevier BV

All content in PEARL is protected by copyright law. Author manuscripts are made available in accordance with publisher policies. Please cite only the published version using the details provided on the item record or document. In the absence of an open licence (e.g. Creative Commons), permissions for further reuse of content should be sought from the publisher or author.



Contents lists available at ScienceDirect

Neurobiology of Disease

journal homepage: www.elsevier.com/locate/ynbdi

Phenotypic effect of *GBA1* variants in individuals with and without Parkinson's disease: The RAPSODI study

Marco Toffoli^{a,b}, Harneek Chohan^c, Stephen Mullin^{a,d}, Aaron Jesuthasan^e, Selen Yalkic^{a,b}, Sofia Koletsis^{a,b}, Elisa Menozzi^{a,b}, Soraya Rahall^a, Naomi Limbachiya^a, Nadine Loefflad^{a,b}, Abigail Higgins^a, Jonathan Bestwick^c, Sara Lucas-Del-Pozo^{a,b}, Federico Fierli^{a,b}, Audrey Farbos^f, Roxana Meزابrovski^{a,b}, Chiao Lee-Yin^{a,b}, Anette Schrag^a, David Moreno-Martinez^g, Derralynn Hughes^g, Alastair Noyce^c, Kevin Colclough^h, Aaron R. Jeffries^f, Christos Proukakis^{a,b}, Anthony H.V. Schapira^{a,b,*}

^a Department of Clinical and Movement Neurosciences, UCL Queen Square Institute of Neurology, London, UK

^b Aligning Science Across Parkinson's (ASAP) Collaborative Research Network, Chevy Chase, MD, USA

^c Preventive Neurology Unit, Wolfson Institute of Population Health, Queen Mary University of London, UK

^d Faculty of Health, University of Plymouth, Plymouth PL4 8AA, UK

^e Charing Cross Hospital, Fulham Palace Road, London W6 8RF, UK

^f Biosciences, Faculty of Health and Life Sciences, University of Exeter, Exeter, UK

^g Lysosomal Storage Disorders Unit, Royal Free Hospital NHS Foundation Trust and University College London, London, UK

^h Exeter Genomics Laboratory, Royal Devon University Healthcare NHS Trust, Exeter, UK

ARTICLE INFO

Keywords:
Parkinson
GBA1
GBA
Prodromal
Genetics

ABSTRACT

Background: Variants in the *GBA1* gene cause the lysosomal storage disorder Gaucher disease (GD). They are also risk factors for Parkinson's disease (PD), and modify the expression of the PD phenotype.

The penetrance of *GBA1* variants in PD is incomplete, and the ability to determine who among *GBA1* variant carriers are at higher risk of developing PD, would represent an advantage for prognostic and trial design purposes.

Objectives: To compare the motor and non-motor phenotype of *GBA1* carriers and non-carriers.

Methods: We present the cross-sectional results of the baseline assessment from the RAPSODI study, an online assessment tool for PD patients and *GBA1* variant carriers. The assessment includes clinically validated questionnaires, a tap-test, the University of Pennsylvania Smell Identification Test and cognitive tests. Additional, homogeneous data from the PREDICT-PD cohort were included.

Results: A total of 379 participants completed all parts of the RAPSODI assessment (89 *GBA1*-negative controls, 169 *GBA1*-negative PD, 47 *GBA1*-positive PD, 47 non-affected *GBA1* carriers, 27 GD). Eighty-six participants were recruited through PREDICT-PD (43 non-affected *GBA1* carriers and 43 *GBA1*-negative controls). *GBA1*-positive PD patients showed worse performance in visual cognitive tasks and olfaction compared to *GBA1*-negative PD patients. No differences were detected between non-affected *GBA1* carriers and *GBA1*-negative controls. No phenotypic differences were observed between any of the non-PD groups.

Abbreviations: AT30, Akinesia Time; BRAIN, BRadykinesia Akinesia INcoordination; CRT, Choice Reaction Time; CRTACC, Choice Reaction Time – Accuracy; DPICNACC, Pattern Separation - New Stimuli - Accuracy; DPICOACC, Pattern Separation - Original Stimuli - Accuracy; GD, Gaucher Disease; HADS, Hospital Anxiety and Depression Scale; KS30, Kinesia Score; MDS-UPDRS2, Movement Disorders Society Unified Parkinson Disease Rating Scale part 2; msec, Milliseconds; NWMRT, Numeric Working Memory Reaction Time; NWMRTNACC, Numeric Working Memory New Stimuli - Accuracy; NWMRTOACC, Numeric Working Memory Original Stimuli – Accuracy; PD, Parkinson Disease; RBDsq, REM Sleep Behaviour Disorder Screening Questionnaire; SPMRT, Spatial Working Memory Reaction Time; SPMNACC, Spatial Working Memory New Stimuli - Accuracy; SPMOACC, Spatial Working Memory Original Stimuli - Accuracy; SRT, Simple Reaction Time; UPSIT, University of Pennsylvania Smell Identification Test; VIGRT, Digit Vigilance Reaction Time; VIGRTACC, Digit Vigilance Reaction Time - Accuracy.

* Corresponding author at: Department of Clinical and Movement Neurosciences, University College London Institute of Neurology, Rowland Hill St., London NW3 2PF, UK.

E-mail address: a.schapira@ucl.ac.uk (A.H.V. Schapira).

<https://doi.org/10.1016/j.nbd.2023.106343>

Received 15 August 2023; Received in revised form 8 October 2023; Accepted 1 November 2023

Available online 3 November 2023

0969-9961/© 2023 The Authors. Published by Elsevier Inc. This is an open access article under the CC BY license (<http://creativecommons.org/licenses/by/4.0/>).

Conclusions: Our results support previous evidence that *GBA1*-positive PD has a specific phenotype with more severe non-motor symptoms. However, we did not reproduce previous findings of more frequent prodromal PD signs in non-affected *GBA1* carriers.

1. Introduction

The *GBA1* gene encodes the lysosomal enzyme glucocerebrosidase. Variants in *GBA1* are a risk factor for Parkinson disease (PD) (Sidransky et al., 2009), with a penetrance that is variable and ranges according to the severity of the variant (Gan-Or et al., 2015).

The clinical phenotype of PD seems to be significantly worse in patients that carry *GBA1* variants compared to non-carriers, although how domains differ and to what extent are matters of debate (Alcalay et al., 2012; Simuni et al., 2020; Malek et al., 2018). *GBA1* variant carriers have an earlier age of PD onset, with poorer overall cognitive function (Alcalay et al., 2012), more frequent non-motor symptoms, visual hallucinations and motor complications (Cilia et al., 2016; Jesús et al., 2016). Some data also suggests a higher prevalence of pre-clinical symptoms in healthy *GBA1* variants carriers compared to non-carriers (McNeill et al., 2012; Beavan et al., 2015; Mullin et al., 2019; Avenali et al., 2019), although this has not been replicated in independent cohorts (Lopez et al., 2022).

Understanding the role of *GBA1* variants in determining phenotypic characteristics is important for prognostic purposes, and to guide the design of clinical trials.

Here, we report baseline data from the RAPSODI study (rapsodistudy.com) (Higgins et al., 2021), an online cohort for the remote assessment of motor and non-motor signs of parkinsonism. We compare characteristics of PD patients with and without *GBA1* variants, healthy *GBA1* carriers, Gaucher disease (GD) patients and controls. To support our findings, we evaluate additional data from the PREDICT-PD (predictpd.com) cohort. We hope to provide further insight into the phenotype-genotype correlation of *GBA1* variants in the pathogenesis of PD.

2. Material and methods

2.1. Recruitment of participants

Participants were recruited through RAPSODI (rapsodistudy.com) (Higgins et al., 2021). The study commenced active recruitment in January 2018 and participants are asked to repeat the assessment every year for up to 25 years. In this paper, we report data from the baseline (year 1) assessment. Participants were allowed to join the study if they were between the age of 18 and 90 and if they: had a diagnosis of GD, a diagnosis of PD, if they knew they carried a *GBA1* variant or if they were relatives of a PD patient, GD patient or *GBA1* variant carrier. Exclusion criteria were the presence of dementia or any other conditions known to cause parkinsonism. Upon enrollment, all participants were required to give informed consent to be included in the study. The work was approved by the London – Queen Square Research Ethics Committee (REC reference: (Martinez-Martin et al., 2013)/LO/1155).

2.2. Assessment

A detailed description of the study design can be found in a previous publication (Higgins et al., 2021). Participants were asked to complete the the REM Sleep Behaviour Disorder Questionnaire (RBDsq) (Stiasny-Kolster et al., 2007), the Movement Disorders Society Unified Parkinson's disease Rating Scale part 2 (MDS-UPDRS2) (Martinez-Martin et al., 2013) and the Hospital Anxiety and Depression Scale (HADS) (Zigmond and Snaith, 1983). The RBDsq has been validated in the general population with a cut-off of 5. However, in this study a cut-off of 6 was used, as it is considered more appropriate for people with PD (Nomura et al.,

2011). Established cut-offs for the HADS scale (0–7 Normal, 8–10 Borderline and 11–21 Abnormal) were used for the sub-scores of depression and anxiety (Zigmond and Snaith, 1983).

Additionally, participants were asked 3 questions about constipation: “Does opening your bowels require a lot of effort?”, “Do you suffer from hard stools?”, “Do you ever use laxatives?”. These had multiple choice answers “Yes”, “Sometimes” and “No”.

Cognitive Tests were delivered through the ‘CogTrack™’ platform (Wesnes et al., 2017), investigating different aspects of cognition, including pattern separation ability, simple reaction time, choice reaction time, digit vigilance, spatial working memory and numeric working memory.

A summary of the tests and outcomes used can be found in supplementary table 1.

The BRAdykinesia AKinesia INcoordination (BRAIN) test (Noyce et al., 2014; Hasan et al., 2019) was used to evaluate hand dexterity and bradykinesia, in which participants were asked to press the “S” and “;” keys on their keyboard in succession as fast as they could. Each hand was assessed separately for 30 s and all participants were given a preceding 5 s practice trial before data was collected. The kinesia score (KS30), corresponding to the number of taps in 30 s, as well as the akinesia time (AT30), which was the mean dwell time on each key in milliseconds (msec) were calculated.

Olfactory function was measured using the University of Pennsylvania Smell Identification Test (UPSIT) (Doty, 2007). The cut-offs provided by the UPSIT manual identified different degrees of deficit: anosmia (0–18), severe microsmia (Noyce et al., 2014; Hasan et al., 2019; Doty, 2007; Toffoli et al., 2021; Parlar et al., 2023; Davis et al., 2016; Weil et al., 2016), moderate microsmia (26–29 for males, 26–30 for females), mild microsmia (30–33 for males, 31–34 for females), and normosmia (34–40 for males, 35–40 for females). The RAPSODI database used for analysis was downloaded on the 3rd January 2023.

2.3. Collection of saliva samples and sequencing

Saliva samples were collected with the DNA OG-500 kit from DNA genotek, posted to participants upon completion of the online part of the assessment. Sequencing of the *GBA1* gene was carried out at the University of Exeter Sequencing Facility with a long read, nanopore technology method previously described (Toffoli et al., 2021). The *LRRK2* G2019S variant was genotyped with KBiosciences Competitive Allele-Specific PCR SNP genotyping system by an external laboratory (LGC Genomics, Hoddesdon, Herts).

2.4. PREDICT-PD

To seek further validation, additional non-affected *GBA1* carriers and age and sex matched *GBA1*-negative controls were included from the PREDICT-PD study. PREDICT-PD is a web-based cohort study to identify individuals at higher risk of PD (ref Noyce et al. JNNP 2014). *GBA1* variants were identified through Sanger sequencing of exons 8–11, rather than full gene sequencing (Noyce et al., Movement Disorders 2017). Questions about constipation, RBDsq, HADS, UPSIT and tap-test were collected similarly to RAPSODI. For these, results show the combined data from the two cohorts. CogTrack testing was not available for PREDICT-PD and are thus only reported for the RAPSODI cohort.

2.5. Statistical analysis

R version 4.2.2 (RRID:SCR_001905, <http://www.r-project.org/>) was

used for statistical analyses.

All outcome measures were compared between the 5 groups. Additional sub-analysis were carried out comparing carriers of risk, mild and severe *GBA1* variants (Parlar et al., 2023).

ANOVA was used to assess differences in age, disease duration, age at diagnosis, years of education, with Tukey multiple comparison test for *post hoc* analysis.

Ordinal logistic regression was used to analyse questions about constipation, MDS-UPDRS2 (after dividing the values in equal deciles), anxiety and depression subscores of HADS, and UPSIT. Logistic regression was used to analyse outcomes of the RBDsq. Linear regression was used to assess differences in KS30, AT30, SRT, CRT, VIGRT, SPMRT, NWMRT. The cognitive scores for accuracy (DPICOACC, DPICNACC, CRTACC, VIGACC, SPMOACC, SPMNACC, NWMOACC, NWMNACC) represent proportions of correct answers, so they were analysed with quasibinomial regression. Age and sex were used as covariate in all analysis, and education was used as covariate in the cognitive tests. Outliers, defined as observations >3 standard deviations from the mean, were removed from the tap test and cognitive test scores.

3. Results

Anonymised participant-level data are reported as supplementary material.

3.1. Size, demographics and genotype

Size and demographics of the cohort of participants that completed the whole assessment are reported in supplementary table 2. One participant had both GD and PD and was excluded from the analysis. Two PD participants were found to carry the *LRRK2* p.G2019S variant and were also excluded from the analysis. Not all participants completed all steps of the assessment, so numbers vary for each test.

Age at recruitment for *GBA1*-negative PD patients was significantly higher than for *GBA1*-negative controls, GD patients and non-affected *GBA1* carriers (all *p*-values <0.01). No other significant differences in age at recruitment were observed. Sex was significantly different between the groups (*p*-value <0.001).

There were no significant differences in disease duration or age at diagnosis among the PD groups. Years of education were similar between the groups.

Genotypes of *GBA1* positive participants are reported in Table 1 and in more details in supplementary table 3. (See Fig. 1.)

3.2. UPSIT score is lower in *GBA1*-positive PD patients

The two PD groups performed worse than all the non-PD groups in the questions about constipation (all *p*-values <0.05), in the MDS-UPDRS2 (all *p*-values <0.001), anxiety subscores of HADS (all *p*-values <0.05), RBDsq (all *p*-values <0.05), UPSIT (all *p*-values <0.001).

The depression sub-score of HADS showed worse outcomes for the two PD groups compared to non-affected *GBA1* carriers and *GBA1*-negative controls (*p*-values all <0.05), but no differences between the PD groups and GD patients.

Table 1

Genotype of *GBA1* variants carriers.

Study		p.N409S	p.L483P	p.E365K	p.T408M	Others	Mild	Severe	Risk variants	Unknown
RAPSODI	Non-affected <i>GBA1</i> carriers	16	6	7	2	16	17	16	9	5
	<i>GBA1</i> -positive PD patients	5	3	20	7	12	6	10	27	4
PREDICT-PD	Non-affected <i>GBA1</i> carriers	8	0	21 ^a	12 ^b	2	8	2	33	0
	Non-affected <i>GBA1</i> carriers	24	6	28	14	18	25	18	42	5
Unified cohorts	Non-affected <i>GBA1</i> carriers	5	3	20	7	12	6	10	27	4
	<i>GBA1</i> -positive PD patients									

^a One individual is a homozygous carrier for p.E365K.

^b One individual is a homozygous carrier for p.T408M.

GBA1-positive PD patients scored worse than *GBA1*-negative PD patients in UPSIT (*p*-value 0.015, OR 0.47, CI 0.25–0.86).

No differences were observed between any of the non-PD groups for any of the questionnaires or UPSIT.

No differences were observed between risk, mild and severe variant carriers among *GBA1*-positive PD and non-affected *GBA1*-carriers.

Results did not change when analysing the RAPSODI cohort separately.

Questionnaire results are reported in Supplementary Table 4 and in Fig. 2.

3.3. The tap test can readily identify people with PD and is slightly worse in *GBA1*-positive PD

KS30 for both dominant and non-dominant hands were worse in the two PD groups compared to all the non-PD groups (all *p*-values <0.001).

AT30 scores for dominant and non-dominant hands were lower in the two PD groups compared to non-affected *GBA1* carriers and *GBA1*-negative controls (all *p*-values <0.01) but were not significantly different from those of GD patients.

KS30 scores were marginally worse in *GBA1*-positive PD patients compared to *GBA1*-negative PD patients for the dominant hand ($\beta = -3.34$, *p*-value = 0.12) and non-dominant hand ($\beta = -3.79$, *p*-value = 0.05).

AT30 score for the non-dominant hand was marginally worse in *GBA1*-positive PD patients compared to *GBA1*-negative PD patients ($\beta = 21.8$, *p*-value = 0.09).

No differences were observed between any of the non-PD groups for KS30 or AT30.

No differences were observed between risk, mild and severe variant carriers among *GBA1*-positive PD and non-affected *GBA1*-carriers.

Results did not change when analysing the RAPSODI cohort separately.

Tap test results are reported in supplementary table 5 and in Fig. 3.

3.4. *GBA1*-positive PD show worse performance in picture recognition and choice reaction time

The scores of the pictures recognition test (DPICOACC and DPICNACC) and reaction time (SRT, CRT, SPMRT, NWMRT, VIGRT) were worse in the two PD groups compared to the non-PD groups (all *p*-values <0.05).

When comparing *GBA1*-positive and *GBA1*-negative PD patients only, *GBA1*-positive PD patients showed a significantly worse performance for DPICOACC, DPICNACC and CRTM (*p*-values 0.015, 0.039 and 0.0246, respectively – shown in Fig. 4).

There were no statistically significant differences between the two PD groups for CRTACC, VIGACC, SPMOACC, SPMNACC, NWMOACC, NWMNACC.

Moreover, no significant differences were observed between the non-PD groups for any of the tests.

No differences were observed between risk, mild and severe variant carriers among *GBA1*-positive PD and non-affected *GBA1*-carriers.

Results of the cognitive tests are reported in supplementary table 6,

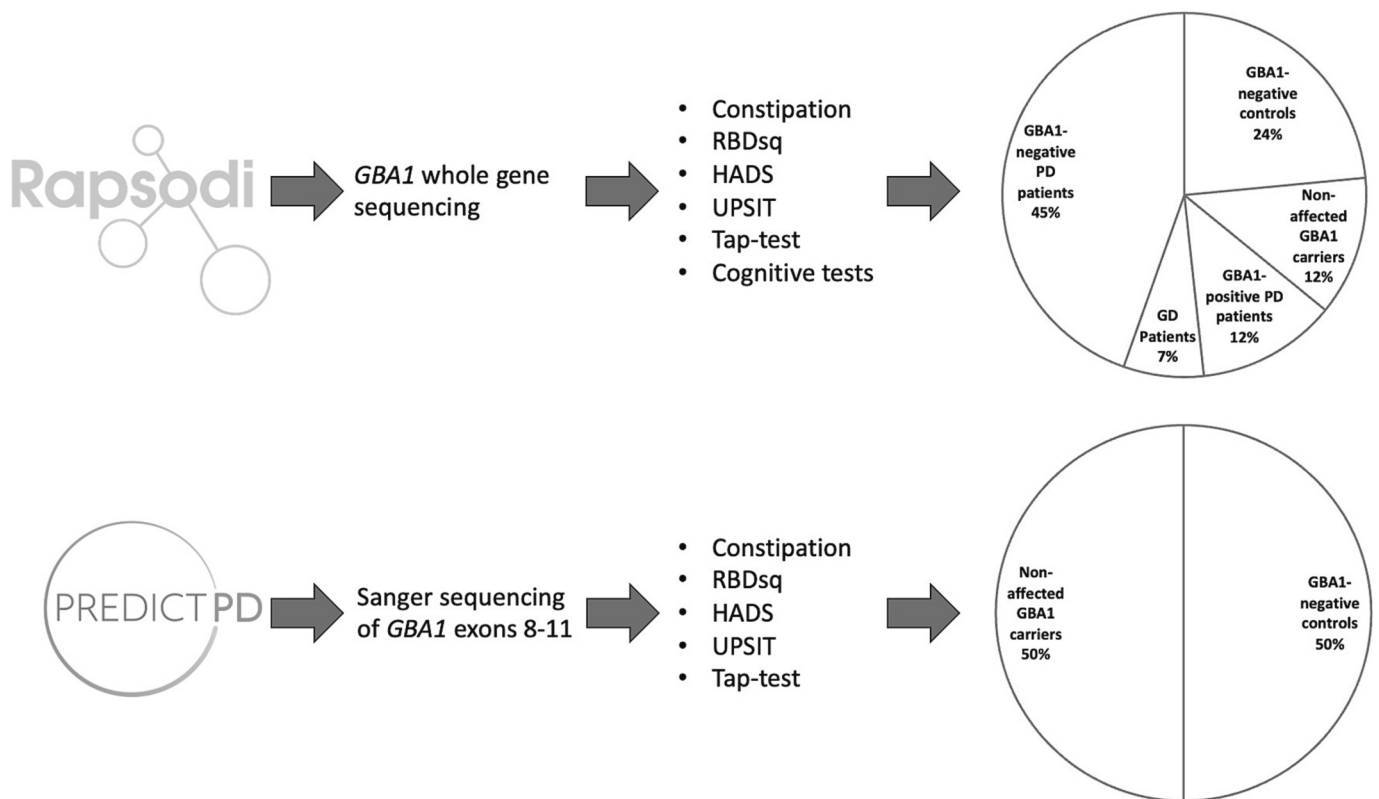


Fig. 1. Summary of the RAPSODI and PREDICT-PD cohorts.

Fig. 4 and supplementary fig. 1.

4. Discussion

The objective of this study was to investigate potential early signs of parkinsonism in non-affected *GBA1* variants carriers, as well as to explore phenotypic differences between individuals with *GBA1*-positive and *GBA1*-negative PD. Our study approach has several strengths compared to previous research (Simuni et al., 2020; Avenali et al., 2019). First, in RAPSODI we adopted a long-read sequencing methodology, which has demonstrated superiority in detecting *GBA1* variants compared to whole-genome short-read sequencing (Toffoli et al., 2021). Second, our study cohort encompasses a diverse range of *GBA1* variants, in contrast to a larger study on prodromal parkinsonian features in carriers, where 96% of the 184 non-manifesting carriers had the p. N409S variant (Simuni et al., 2020). Additionally, our study includes a comparable but larger number of *GBA1* non-manifesting carriers when compared to two previously reported cohorts (Avenali et al., 2019; Lopez et al., 2022). Lastly, our assessment employs a computer-based method for measuring hand dexterity and cognition, thereby eliminating the issue of inter-rater variability and producing good quality continuous data (Hasan et al., 2019).

For most of the captured outcomes, both groups of PD patients performed significantly worse compared to people without PD, suggesting that the assessment tools are appropriate for capturing differences between these two populations. Analysis of longitudinal data will clarify whether the assessment is also able to detect subtle changes in currently unaffected individuals that might then develop PD.

We showed a difference in the PD phenotype of *GBA1* carriers compared to non-carriers in UPSIT, tap test and cognitive tests for pattern recognition and reaction time. For some of the other scores, even when not statistically significant, the data suggested a trend toward a worse performance of *GBA1*-positive PD patients compared to *GBA1*-negative PD patients (constipation, anxiety and depression, RBD,

working memory).

A previous study similarly showed a worse cognitive profile in 26 *GBA1*-positive PD compared to 39 *GBA1*-negative PD, but no differences in UPSIT (Alcalay et al., 2012), and another study showed a more pronounced progression of cognitive dysfunction in 59 *GBA1*-positive PD compared to 684 *GBA1*-negative PD (Davis et al., 2016). On the other hand, a recent study showed no differences in the cognitive profile in PD patients with or without *GBA1* variants and duration of disease <3.5 years (193 *GBA1*-PD vs 1700 *GBA1*-negative PD) (Malek et al., 2018). Recent analysis of the large Parkinson's Progression Markers Initiative (PPMI) cohort showed no difference in olfaction between *GBA1* positive and *GBA1* negative PD patients.

Our findings support the notion that cognition is more affected in *GBA1*-positive PD patients and suggest that olfaction is also worse in *GBA1*-positive PD patients, calling for additional confirmation in independent cohorts.

Of interest is the difference between the two PD groups in the pattern recognition test, which involves visual memory and visuospatial skills, supporting previous evidence that visual functions are more affected in *GBA1*-positive PD (Alcalay et al., 2012; Weil et al., 2016; Mata et al., 2016).

We did not observe a significantly different age at onset of PD or a different prevalence of males and females, as has been reported in other studies (Malek et al., 2018).

Moreover, we did not detect a phenotypical effect of *GBA1* variants severity when stratifying them as risk, mild and severe (Parlar et al., 2023). Given the small sample size, this exploratory analysis was likely underpowered.

It remains uncertain as to whether non-affected *GBA1* variant carriers show a higher prevalence of prodromal PD features than the general population.

A previous cohort study from our group showed worse olfaction, cognition and motor signs of PD at baseline, and a steeper progression, in *GBA1* variant carriers compared to non-carrier controls. That cohort

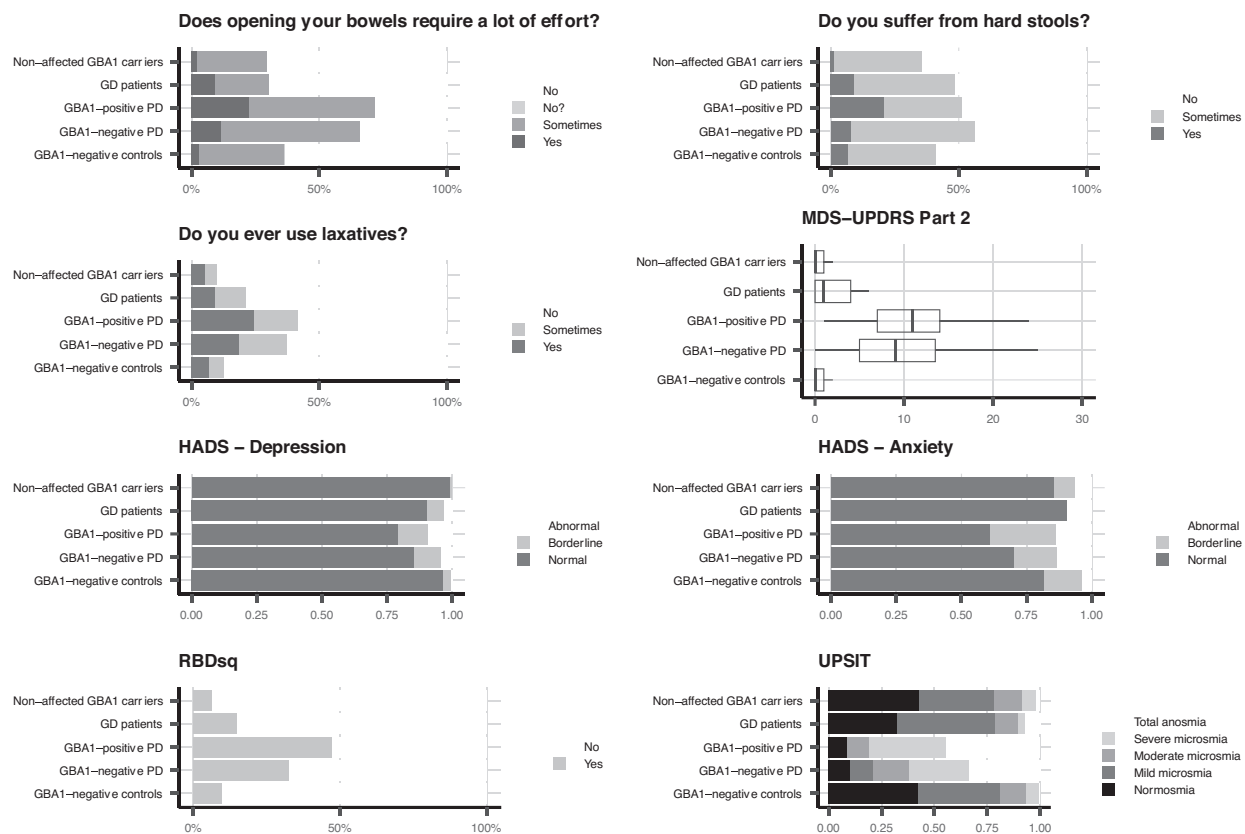


Fig. 2. Clinical questionnaires and UPSIT.

For constipation, HADS, RBDsq and UPSIT scores, data are reported as percentage of participants per group.

MDS-UPDRS 2 scores are reported as mean (central bar), 25th and 75th percentiles (hinges) and the smallest value at most 1.5 * interquartile range of the hinge (whiskers).

MDS-UPDRS: Movement Disorder Society – Unified Parkinson's disease Rating Scale. HADS: Hospital Anxiety and Depression Scale. RBDsq: REM Sleep Behaviour Disorder screening questionnaire. UPSIT: University of Pennsylvania Smell Identification Test.

had a smaller sample size, and most of the differences between the groups were already present at baseline (Avenali et al., 2019). A recent study showed no significant deterioration of UPSIT scores in 117 unaffected *GBA1* variant carriers compared to controls (Lopez et al., 2022).

The cross-sectional analysis presented in our paper did not highlight any significant differences between heterozygous and biallelic *GBA1* variant carriers and *GBA1*-negative controls. The longitudinal assessment will clarify whether the two groups show a different rate of progression of prodromal PD symptoms or conversion to PD. Whether this hypothetical difference in prodromal symptoms simply reflects the *GBA1* genotype status or truly represents an early manifestation of PD, will also remain an open question that longitudinal studies will address. The combination of biochemical and imaging markers of PD in addition to clinical features, might help better define of the potential risk of future development of PD in *GBA1* carriers (Menozzi et al., 2023).

Our studies use an online approach to assess participants. This enables us to reach a larger audience and facilitates participation.

However, this process has limitations. First, there might be a selection bias toward more computer literate individuals, as participants that do not own a computer, or that do not know how to use one, are automatically excluded from the trial. Moreover, most of the assessment is unsupervised, with an intrinsic risk of introducing unreliable observations (participants might ask for help to complete some tasks, there might be connectivity issues hindering the assessment, some instructions on how to carry out the tests might be misunderstood). We addressed these issues by using the median response times in the cognitive tests, a parameter that is less affected by extreme outliers.

Another potential limitation of this study is the selection of *GBA1*-negative controls among relatives (especially partners and spouses) of

GBA1 carriers and PD and GD patients. This has the advantage of including controls that are exposed to similar environmental factors, but the disadvantage of creating a group that is inherently mismatched for sex.

Finally, In the context of the PREDICT-PD study, it is noteworthy that the sequencing was limited to exons 8 through 11 of *GBA1*. While this region encompasses the majority of *GBA1* variants, certain variants may have escaped detection, potentially resulting in the misclassification of individuals as *GBA1*-negative.

5. Conclusions

In this cross-sectional analysis, we were able to show a different phenotype in *GBA1* positive PD patients compared to *GBA1* negative PD patients, with the former having worse olfaction and cognitive performance (visual function and reaction time). We did not show any meaningful differences between *GBA1*-negative controls and non-affected *GBA1* carriers.

The analysis of the longitudinal data will provide additional insight into differences in progression between these groups.

Funding

This research was funded in part by Aligning Science Across Parkinson's [ASAP-000420] through the Michael J. Fox Foundation for Parkinson's Research (MJFF). For the purpose of open access, the author has applied a CC BY public copyright license to all Author Accepted Manuscripts arising from this submission.

The work was supported by the EU Joint

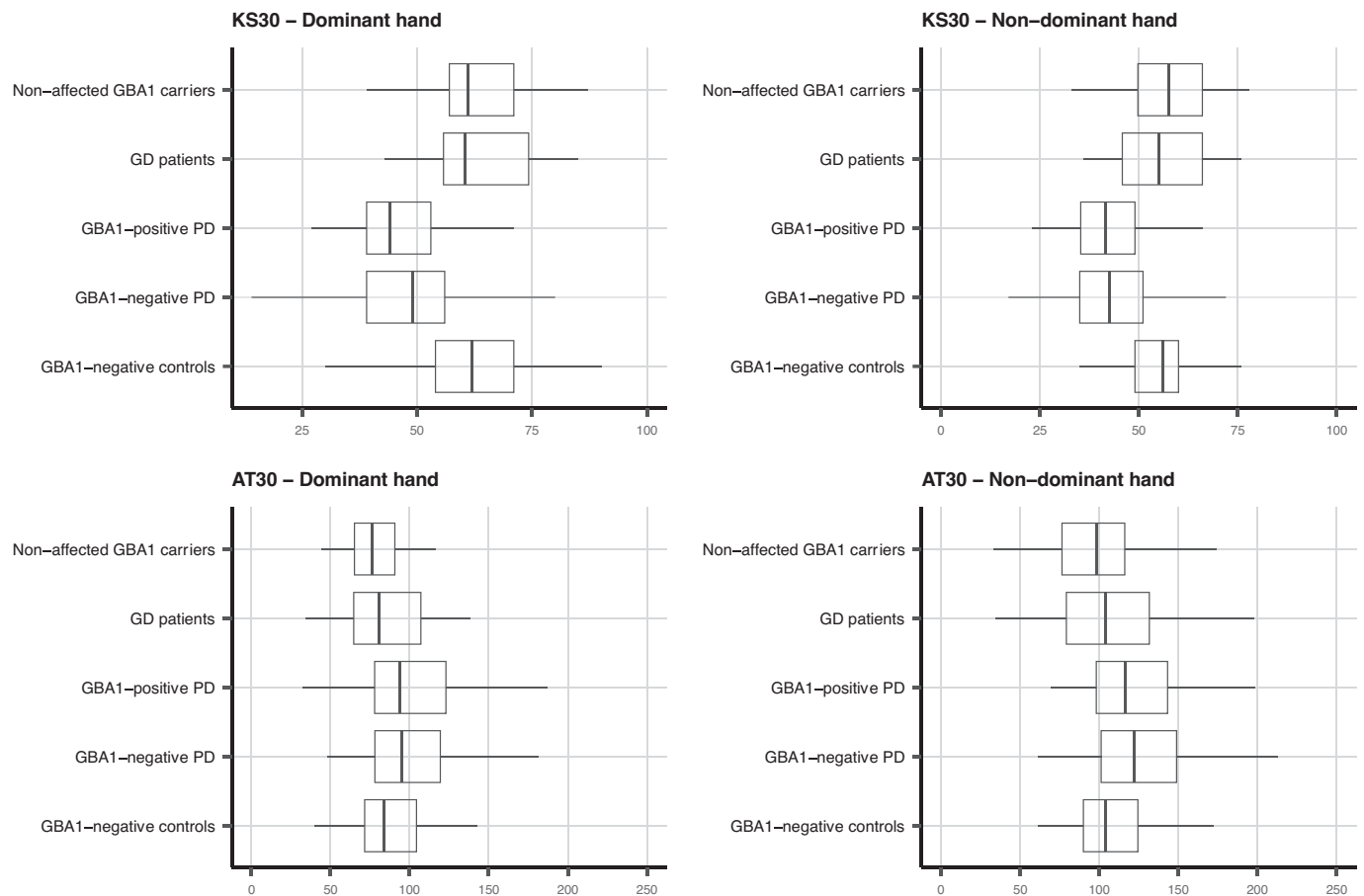


Fig. 3. Tap-test data.

KS30 is reported as number of taps in 30 s, AT30 shows the mean dwell time on each key in milliseconds. Data are reported separately for dominant and non-dominant hands.

Data are reported as mean (central bar), 25th and 75th percentiles (hinges) and the smallest value at most 1.5 * interquartile range of the hinge (whiskers).

KS30: Kinesia Score 30 Seconds, AT30: Akinesia Time 30 s.

Programme-Neurodegenerative Disease Research (JPND) project (GBA-PaCTS, 01ED2005B) and MR/T046007/1. The PREDICT-PD study was funded by Parkinson's UK.

Authors roles

Toffoli M Conceptualization, Investigation, Formal analysis, Writing - original draft.

- Chohan H** Data Curation, Writing - review & editing.
- Mullin S** Study conception, Writing - review & editing.
- Jesuthasan A** Data Curation, Writing - review & editing.
- Yalkic S** Data Curation, Writing - review & editing.
- Koletsis S** Data Curation, Writing - review & editing.
- Menzio E** Data Curation, Writing - review & editing.
- Rahall S** Data Curation, Writing - review & editing.
- Limbachiya N** Data Curation, Writing - review & editing.
- Loefflad N** Data Curation, Writing - review & editing.
- Higgins A** Data Curation, Writing - review & editing.
- Bestwick J** Data Curation, Writing - review & editing.
- Lucas-Del-Pozo S** Data Curation, Writing - review & editing.
- Fierli F** Data Curation, Writing - review & editing.
- Farbos A** Investigation.
- Mezabrovski R** Data Curation, Writing - review & editing.
- Lee-Yin C** Data Curation, Writing - review & editing.
- Schrag A** Conceptualization, Writing - review & editing.
- Moreno-Martinez D** Data Curation, Writing - review & editing.
- Hughes D** Conceptualization, Data Collection, Writing - review &

editing.

Noyce A Conceptualization, data collection, Writing - review & editing.

Colclough K Investigation, Writing - review & editing.

Jeffries AR Investigation, Writing - review & editing.

Proukakis C Conceptualization, Writing - review & editing.

Schapira AHV Conceptualization, Writing - review & editing.

Disclosures

Toffoli M Employee of NHS and UCL.

Chohan H Employee of UCL.

Mullin S Employee of NHS.

Jesuthasan A Nothing to disclose.

Yalkic S Employee of UCL.

Koletsis S Employee of UCL.

Menzio E was supported by a Royal Free Charity Fellowship.

Rahall S Nothing to disclose.

Limbachiya N Nothing to disclose.

Loefflad N Employee of UCL.

Higgins A Nothing to disclose.

Bestwick J Nothing to disclose.

Lucas-Del-Pozo S was supported by a UCL fellowship.

Fierli F Employee of UCL.

Farbos A Employee of University of Exeter.

Mezabrovski R Employee of UCL.

Lee-Yin C Nothing to disclose.

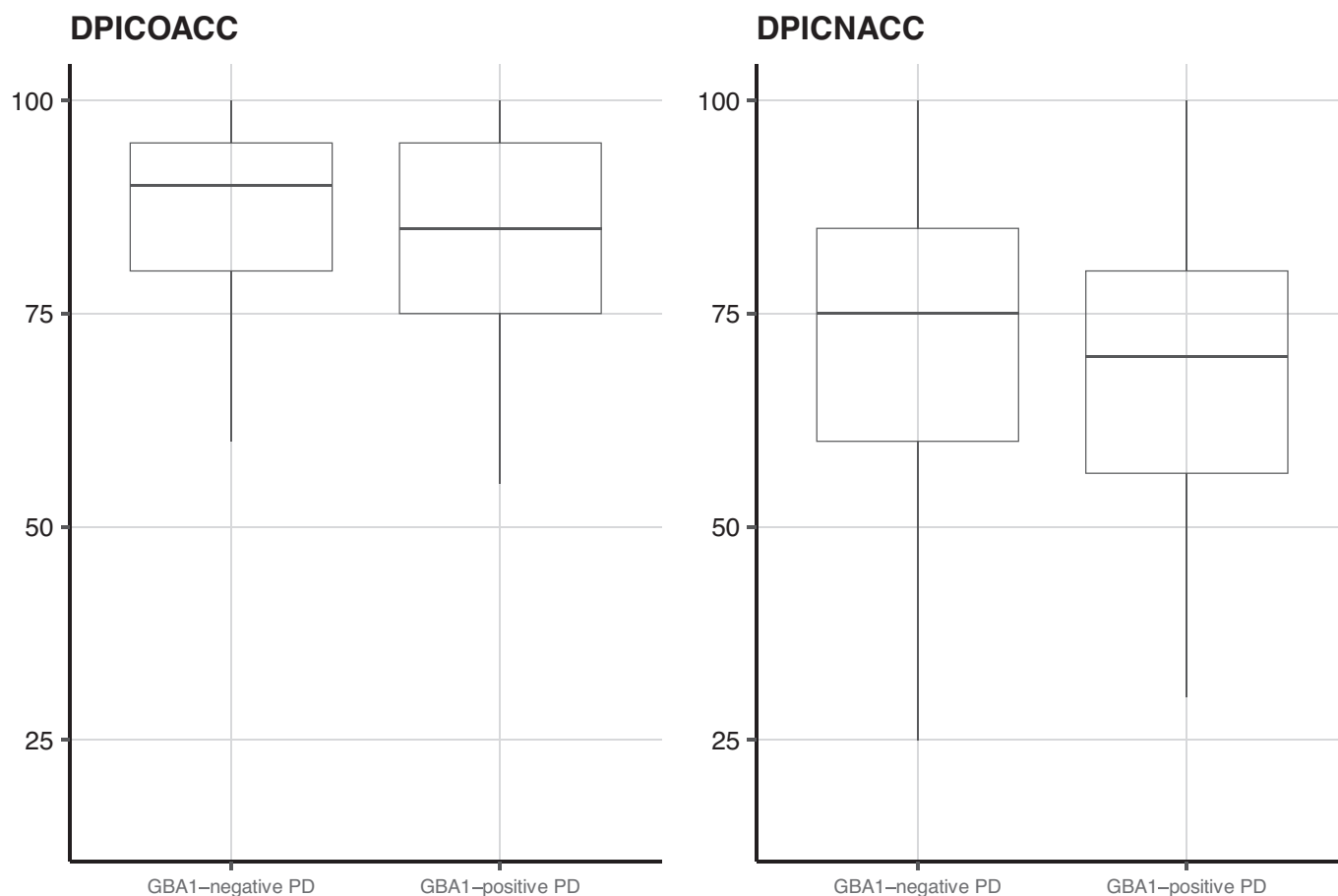


Fig. 4. Pattern separation test, differences between *GBA1*-positive and *GBA1*-negative PD.

Data are reported as mean (central bar), 25th and 75th percentiles (hinges) and the smallest value at most 1.5 * interquartile range of the hinge (whiskers). DPICOACC: Percentage of correct answers recognising original pictures, DPICNACC: Percentage of correct answers recognising new pictures.

Schrag A Nothing to disclose.

Moreno-Martinez D received travel grants from Sanofi, Takeda and Amicus.

Hughes D received honoraria for speaking and consulting and travel arrangements from Sanofi and Takeda.

Noyce A grants from Parkinson's UK, Barts Charity, Cure Parkinson's, National Institute for Health and Care Research, Innovate UK, Virginia Keiley benefaction, Solvemed, the Medical College of Saint Bartholomew's Hospital Trust, Alchemab, Aligning Science Across Parkinson's Global Parkinson's Genetics Program (ASAP-GP2) and the Michael J Fox Foundation. Prof Noyce reports consultancy and personal fees from AstraZeneca, AbbVie, Profile, Roche, Biogen, UCB, Bial, Charco Neurotech, uMedeod, Alchemab, Sosei Heptares and Britannia, outside the submitted work. Prof Noyce is an Associate Editor for the Journal of Parkinson's Disease.

Colclough K Employee of NHS.

Jeffries AR Employee of University of Exeter.

Proukakis C Employee of NHS and UCL.

Schapira AHV Employee of NHS and UCL. Medical Research Council, Michael J. Fox Foundation (MJFF), Aligning Science Across Parkinson's, and Cure Parkinson's (research support); AvroBio, Auxilius, Coave, Destin, Enterin, Escape Bio, Genilac, and Sanofi (consulting fees); and Prada Foundation (speaking fees).

Ethical compliance statement

All participants gave informed consent to be included in the study. The work was approved by the London – Queen Square Research Ethics

Committee (REC reference: 15/LO/1155).

We confirm that we have read the Journal's position on issues involved in ethical publication and affirm that this work is consistent with those guidelines.

Ethical approval for the PREDICT-PD study was granted by Central London Research Ethics Committee 3 (reference number 10/H0716/85).

Acknowledgements

We would like to thank AH software for their support in designing and maintaining the RAPSODI online portal.

We would like to thank Professor Keith Andrew Wesnes for his support with collecting and interpreting the CogTrack data.

Declaration of Competing Interest

The authors have no conflicts of interest or financial issues to declare in relation to this manuscript.

Data availability

Anonymised participant level data are reported as supplementary material in the file named "Aparticipant-level data".

All other data produced in the present study are available upon reasonable request to the authors.

The R code used for the analysis can be found on Zenodo (DOI: <https://doi.org/10.5281/zenodo.8204348>).

Appendix A. Supplementary data

Supplementary data to this article can be found online at <https://doi.org/10.1016/j.nbd.2023.106343>.

References

- Alcalay, R.N., Caccappolo, E., Mejia-Santana, H., Tang, M.X., Rosado, L., Orbe Reilly, M., et al., 2012. Cognitive performance of GBA mutation carriers with early-onset PD: the CORE-PD study. *Neurology* 78 (18), 1434–1440. May 1.
- Avenali, M., Toffoli, M., Mullin, S., McNeil, A., Hughes, D.A., Mehta, A., et al., 2019. Evolution of prodromal parkinsonian features in a cohort of GBA mutation-positive individuals: a 6-year longitudinal study. *J. Neurol. Neurosurg. Psychiatry* 90 (10), 1091–1097. Oct.
- Beavan, M., McNeill, A., Proukakis, C., Hughes, D.A., Mehta, A., Schapira, A.H.V., 2015. Evolution of prodromal clinical markers of Parkinson disease in a glucocerebrosidase mutation positive cohort. *JAMA Neurol.* 72 (2), 201–208. Feb 1.
- Cilia, R., Tunesi, S., Marotta, G., Cereda, E., Siri, C., Tesi, S., et al., 2016. Survival and dementia in GBA-associated Parkinson's disease: the mutation matters. *Ann. Neurol.* 80 (5), 662–673. Nov 1.
- Davis, M.Y., Johnson, C.O., Leverenz, J.B., Weintraub, D., Trojanowski, J.Q., Chen-Plotkin, A., et al., 2016. Association of GBA mutations and the E326K polymorphism with motor and cognitive progression in Parkinson disease. *JAMA Neurol.* 73 (10), 1217–1224. Oct 1.
- Doty, R.L., 2007. Office procedures for quantitative assessment of olfactory function. *Am. J. Rhinol.* 21 (4), 460–473. Jul 1.
- Gan-Or, Z., Amshalom, I., Kilarski, L.L., Bar-Shira, A., Gana-Weisz, M., Mirelman, A., et al., 2015. Differential effects of severe vs mild GBA mutations on Parkinson disease. *Neurology* 84 (9), 880–887. Mar 3.
- Hasan, H., Burrows, M., Athauda, D.S., Hellman, B., James, B., Warner, T., et al., 2019. The BRadykinesia akinesia INcoordination (BRAIN) tap test: capturing the sequence effect. *Mov. Disord. Clin. Pract.* 6 (6), 462–469. Jul 25.
- Higgins, A.L., Toffoli, M., Mullin, S., Lee, C.Y., Koletsis, S., Avenali, M., et al., 2021. The remote assessment of parkinsonism supporting the ongoing development of interventions in Gaucher disease. *Neurodegener. Dis. Manag.* 11 (6), 451–458. Dec 1.
- Jesús, S., Huertas, I., Bernal-Bernal, I., Bonilla-Toribio, M., Cáceres-Redondo, M.T., Vargas-González, L., et al., 2016. GBA variants influence motor and non-motor features of Parkinson's disease. Toft M, editor. *PLOS ONE* 11 (12). Dec 28. e0167749.
- Lopez, G.J., Lichtenberg, J., Tayebi, N., Ryan, E., Lecker, A.L., Sidransky, E., 2022. Longitudinal evaluation of olfactory function in individuals with Gaucher disease and GBA1 mutation carriers with and without Parkinson's disease. *Front. Neurol.* 13, 1039214.
- Malek, N., Weil, R.S., Bresner, C., Lawton, M.A., Grosset, K.A., Tan, M., et al., 2018. Features of GBA-associated Parkinson's disease at presentation in the UK tracking Parkinson's study. *J. Neurol. Neurosurg. Psychiatry* 89 (7), 702–709. Jul 1.
- Martinez-Martin, P., Rodriguez-Blazquez, C., Alvarez-Sanchez, M., Arakaki, T., Bergareche-Yarza, A., Chade, A., et al., 2013. Expanded and independent validation of the Movement Disorder Society–Unified Parkinson's Disease Rating Scale (MDS-UPDRS). *J. Neurol.* 260 (1), 228–236. Jan 5.
- Mata, I.F., Leverenz, J.B., Weintraub, D., Trojanowski, J.Q., Chen-Plotkin, A., Van Deerlin, V.M., et al., 2016. GBA variants are associated with a distinct pattern of cognitive deficits in Parkinson's disease. *Mov. Disord.* 31 (1), 95–102. Jan 1.
- McNeill, A., Duran, R., Proukakis, C., Bras, J., Hughes, D., Mehta, A., et al., 2012. Hyposmia and cognitive impairment in Gaucher disease patients and carriers. *Mov. Disord.* 27 (4), 526–532. Apr.
- Menzio, E., Schapira, A.H.V., Blandini, F., Avenali, M., 2023. Who is at risk of Parkinson disease? Refining the preclinical phase of GBA1 and LRRK2 variant carriers: a clinical, biochemical, and imaging approach. *Curr. Neurol. Neurosci. Rep.* 23 (4), 121–130.
- Mullin, S., Beavan, M., Bestwick, J., McNeill, A., Proukakis, C., Cox, T., et al., 2019. Evolution and clustering of prodromal parkinsonian features in GBA1 carriers. *Mov. Disord. Off J. Mov. Disord. Soc.* 34 (9), 1365–1373. Sep.
- Nomura, T., Inoue, Y., Kagimura, T., Uemura, Y., Nakashima, K., 2011. Utility of the REM sleep behavior disorder screening questionnaire (RBDSQ) in Parkinson's disease patients. *Sleep Med.* 12 (7), 711–713.
- Noyce, A.J., Nagy, A., Acharya, S., Hadavi, S., Bestwick, J.P., Fearnley, J., et al., 2014. Bradykinesia-akinesia incoordination test: validating an online keyboard test of upper limb function. *Vrana KE, editor. PLoS One* 9 (4). Apr 29. e96260.
- Parlar, S.C., Grenn, F.P., Kim, J.J., Baluwendraat, C., Gan-Or, Z., 2023. Classification of GBA1 variants in Parkinson's disease: the GBA1-PD browser. *Mov. Disord. Off J. Mov. Disord. Soc.* 38 (3), 489–495. Mar.
- Sidransky, E., Nalls, M.A.A., Aasly, J.O.O., Aharon-Peretz, J., Annesi, G., Barbosa, E.R.R., et al., 2009. Multicenter analysis of glucocerebrosidase mutations in Parkinson's disease. *N. Engl. J. Med.* 361 (17), 1651–1661.
- Simuni, T., Uribe, L., Cho, H.R., Caspell-Garcia, C., Coffey, C.S., Siderowf, A., et al., 2020. Clinical and dopamine transporter imaging characteristics of non-manifest LRRK2 and GBA mutation carriers in the Parkinson's Progression Markers Initiative (PPMI): a cross-sectional study. *Lancet Neurol.* 19 (1), 71–80. Jan 1.
- Stiasny-Kolster, K., Mayer, G., Schäfer, S., Möller, J.C., Heinzel-Gutenbrunner, M., Oertel, W.H., 2007. The REM sleep behavior disorder screening questionnaire—a new diagnostic instrument. *Mov. Disord.* 22 (16), 2386–2393. Sep 25.
- Toffoli, M., Chen, X., Sedlazeck, F.J., Lee, C.Y., Mullin, S., Higgins, A., et al., 2021. Comprehensive analysis of GBA using a novel algorithm for Illumina whole-genome sequence data or targeted Nanopore sequencing [Internet]. <https://doi.org/10.1101/2021.11.12.21266253v1>. Nov [cited 2021 Nov 15] p. 2021.11.12.21266253. Available from.
- Weil, R.S., Schrag, A.E., Warren, J.D., Crutch, S.J., Lees, A.J., Morris, H.R., 2016. Visual dysfunction in Parkinson's disease. *Brain.* 139 (11), 2827–2843. Nov 1.
- Wesnes, K.A., Brooker, H., Ballard, C., McCambridge, L., Stenton, R., Corbett, A., 2017. Utility, reliability, sensitivity and validity of an online test system designed to monitor changes in cognitive function in clinical trials. *Int. J. Geriatr. Psychiatry* 32 (12), e83–e92. Dec 1.
- Zigmond, A.S., Snaitch, R.P., 1983. The hospital anxiety and depression scale. *Acta Psychiatr. Scand.* 67 (6), 361–370. Jun.